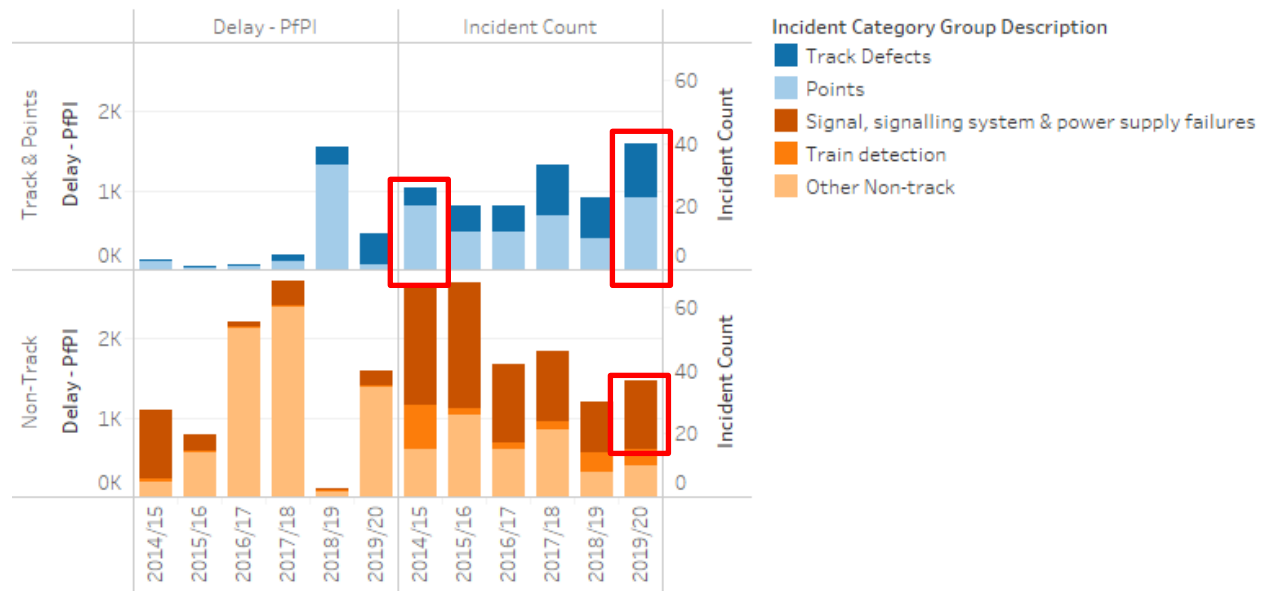


Graph demonstrating delay minutes and delay incidents occurring in the King's Cross area.

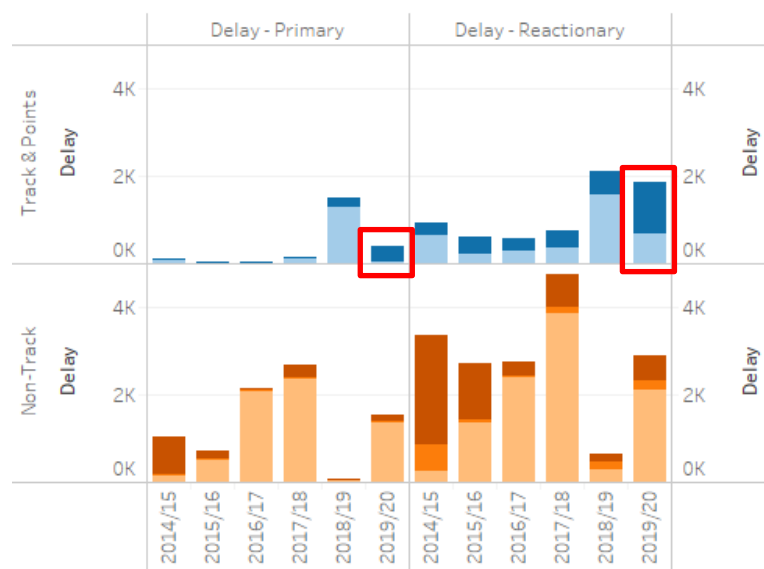
Delay minutes (left hand side) and delay incidents (right hand side) over last 5 years directly occurring in the King' Cross area. Red box highlighted areas referred to within SRD, principally the increasing trend in track and points related incidents over the last 5 years.

King's Cross Delay & Incidents - by cause



Primary delay minutes – those directly incurred in the King's Cross area (left hand side) and reactionary delay minutes (right hand side) over last 5 years relating to the incidents outlined in the graph above. Demonstrates increasing trend in reactionary delay across the network as a result of incidents occurring on the King's Cross infrastructure with particular relation to track and points related issues.

King's Cross Delay - by Type



Drawn from industry delay attribution data on the 08th September 2020.